

Christy Gridley

<http://www.christysstampingspot.com/>

christysstampingspot@gmail.com

Perennial Lavender DSP Stepped Up Card



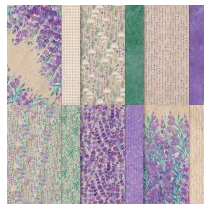
Card Measurements:

- Fresh Freesia cs card base - 11" x 4 1/4" scored at 5 1/2".
- Gorgeous Grape cs panel - 5 3/8" x 4 1/8".
- Perennial Lavender DSP panel - 5 1/4" x 4" plus two 1/2" x 4" strips.
- Fresh Freesia cs sentiment panel layer - 1" x 2".
- Basic White cs sentiment banner - 3/4" x 1 3/4" with one end flagged with paper snips.
- Basic White cs inside panel - 5 1/8" x 3 7/8".
- White Diagonal Trim
- DSP = Designer Series Paper
- cs = cardstock

Supplies needed:



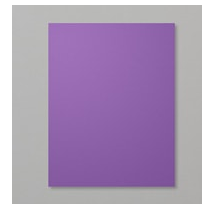
Gorgeous Grape Classic Stampin' Pad
[147099]
\$9.00



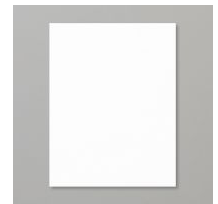
Perennial Lavender 12" X 12" (30.5 X 30.5 Cm) Designer Series Paper
[162593]
\$12.50



Fresh Freesia 8 1/2" X 11" Cardstock
[155613]
\$10.00



Gorgeous Grape 8-1/2" X 11" Cardstock
[146987]
\$10.00



Basic White 8 1/2" X 11" Cardstock
[159276]
\$10.50



Paper Trimmer
[152392]
\$26.00



Paper Snips
[103579]
\$11.00



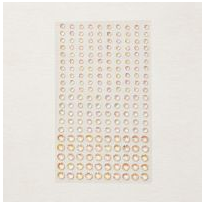
Bone Folder
[102300]
\$7.00



Simply Shabby
[147042]
\$8.50



Take Your Pick
[144107]
\$11.00



Iridescent Rhinestones Basic

Jewels
[158130]
\$7.50



Stampin' Dimensionals

[104430]
\$4.25



Mini Glue Dots

[103683]
\$5.75



Tear & Tape Adhesive

[154031]
\$7.00



Multipurpose Liquid Glue

[110755]
\$5.50



Stamped With Love

Photopolymer Stamp Set

(English)
[161395]
\$20.00

Project Recipe:



1. Start with a Fresh Freesia cardstock card base. Cut a Gorgeous Grape cardstock panel and Perennial Lavender Designer Series Paper panel. Glue the Designer Series Paper to the Gorgeous Grape cardstock panel. Wrap the panels with the White Diagonal Trim (combo pack) using Tear & Tape to secure the ends on the back of the panels. Glue the wrapped panels to the card base.



2. Cut a Basic White cardstock sentiment panel and a Fresh Freesia cardstock sentiment panel layer. Stamp the sentiment from the Simply Said stamp set in Gorgeous Grape ink on the Basic White cardstock sentiment panel. Use paper snips to flag one end creating a banner. Glue the sentiment banner to the Fresh Freesia cardstock sentiment panel layer. Use Stampin' Dimensionals to add the sentiment panels to the right side of the card front overlapping the wrapped ribbon. Tie a small bow with the White Diagonal Trim and use glue dots to add it to the left of the sentiment panels overlapping the wrapped ribbon. Add Iridescent rhinestones to the card front for sparkle.



3. Add a Basic White cardstock inside panel to write your message. Add a strip of Designer Series Paper and stamp the sentiment from the Simply Said stamp set in Gorgeous Grape ink to the inside and back of the card to pull the theme through.