

Christy Gridley

<http://www.christysstampingspot.com/>[christysstampingspot@gmail.com](mailto:christysstampingspot@gmail.com)

# Wildlife Wonder & Tree Rings Hybrid Card

*Christy Gridley*  
ChristysStampingSpot.com



## Card Measurements:

Pebbled Path cs card base - 8 1/2" x 5 1/2" scored at 4 1/4".

Embossed Pebbled Path 2023-2025 In Color Luster Specialty Paper panel - 3 3/4" x 5 1/2".

Pebbled Path 2023-2025 In Color DSP panel - 3" x 5 1/2" plus two 1/2" x 5 1/4" strips.

Basic White cs stitched rectangle - die cut with the Radiating Stitches dies.

Embossed Pebbled Path cs tree ring - die cut & embossed with the Tree Rings Hybrid Embossing Folder & dies.

In Color Luster Specialty Paper panel sprig - die cut & embossed with the Tree Rings Hybrid Embossing Folder & dies.

Basic White cs sentiment panel - (1 1/2" x 2") fussy cut with paper snips and top ripped.

Basic White cs inside panel - 3 7/8" x 5 1/8".

DSP = Designer Series Paper

cs = cardstock

## Supplies needed:



**Wildlife Wonder Cling Stamp**

**Set (English)**

[157923]

\$24.00



**Pebbled Path Classic**

**Stampin' Pad**

[161648]

\$9.00

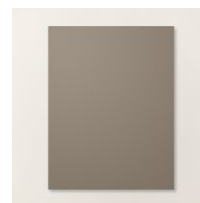


**Clear Wink Of Stella Glitter**

**Brush**

[141897]

\$8.00



**Pebbled Path 8 1/2" X 11"**

**Cardstock**

[161722]

\$10.00



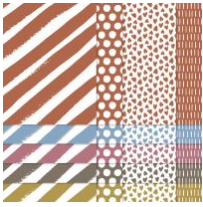
**2023-2025 In Color™ 12" X 12"**

**(30.5 X 30.5 Cm) Luster**

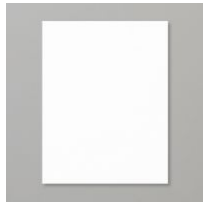
**Specialty Paper**

[161746]

\$11.00



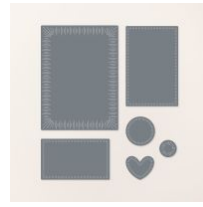
**2023-2025 In Color 6" X 6"**  
**(15.2 X 15.2 Cm) Designer**  
**Series Paper**  
[161646]  
\$12.50



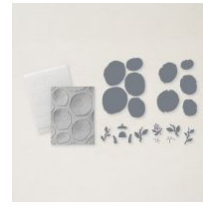
**Basic White 8 1/2" X 11"**  
**Cardstock**  
[159276]  
\$10.50



**Stampin' Cut & Emboss**  
**Machine**  
[149653]  
\$128.00



**Radiating Stitches Dies**  
[161595]  
\$30.00



**Tree Rings Hybrid**  
**Embossing Folder**  
[159888]  
\$37.00



**Timber 3 D Embossing Folder**  
[156406]  
\$11.00



**Paper Trimmer**  
[152392]  
\$26.00



**Paper Snips**  
[103579]  
\$11.00



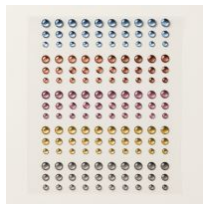
**Bone Folder**  
[102300]  
\$7.00



**Simply Shammy**  
[147042]  
\$8.50



**Take Your Pick**  
[144107]  
\$11.00



**2023-2025 In Color™ Dots**  
[161620]  
\$8.00



**Stampin' Dimensionals**  
[104430]  
\$4.25



**Mini Glue Dots**  
[103683]  
\$5.75



**Multipurpose Liquid Glue**  
[110755]  
\$5.50



**Stamped With Love**  
**Photopolymer Stamp Set**  
**(English)**  
[161395]  
\$20.00

### Project Recipe:



1. Start with a Pebbled Path cardstock card base. Cut a Pebbled Path 2023-2025 In Color Luster Specialty Paper panel and a Pebbled Path 2023-2025 In Color Designer Series Paper panel. Dry emboss the Luster Specialty Paper panel with the Timber 3D embossing folder. Glue the embossed panel to the card base and then layer, using glue, the 2023-2025 In Color Designer Series Paper panel over the embossed panel on the card front.



2. Die cut a Basic White cardstock stitched rectangle with the Radiating Stitches dies. Stamp the bear image from the Wildlife Wonder stamp set in Pebbled Path ink on the right side of the stitched rectangle. Add Wink of Stella to the bear's eye for sparkle. Use Stampin' Dimensionals to add the stitched rectangle on the right side of the card front. Die cut and emboss a Pebbled Path cardstock tree ring with the Tree Rings Hybrid embossing folder & dies. Use a Stampin' Dimensional and glue to add the tree ring to the bottom left of the card front overlapping the stitched rectangle.



3. Stamp the sentiment from the Wildlife Wonder stamp set in Pebbled Path ink on Basic White cardstock. Use Paper Snips to cut out the sentiment and then gently tear the top of the sentiment panel leaving a ripped top edge. Use glue to add the sentiment panel to card front overlapping the tree ring. Die cut a Pebbled Path 2023-2025 In Color Luster Specialty Paper sprig with the Tree Ring Hybrid dies. Use glue dots to add the sprig to the card front overlapping the tree ring and sentiment panel. Add 2023-2025 In Color Dots to the tree ring under the sentiment and the card front.



4. Add a Basic White cardstock inside panel to write your message. Add a strip of Designer Series Paper to the inside and back of the card to pull the theme through. Stamp the sentiment from the Wildlife Wonder stamp set in Pebbled Path ink on right side of the inside panel above the Designer Series Paper strip.