

Christy Gridley

<http://www.christysstampingspot.com/>

christysstampingspot@gmail.com

Very Vanilla & Abigail Rose DSP Teacup Card



Card Measurements:

- Very Vanilla Thick cs card base - 11" x 4 1/4" scored at 5 1/2".
- Embossed Very Vanilla cs panel - 5 3/8" x 4 1/8".
- Abigail Rose DSP panel triangle - 5 1/4" x 4" cut diagonally plus two 1/2" x 4" strips.
- Basic Black cs panel triangle layer - 5 3/8" x 4 1/8" cut diagonally.
- Embossed Basic Black cs teacup - die cut with Teacup dies.
- Abigail Rose DSP flowers & leaves - fussy cut with paper snips.
- Basic Black cs sprigs - three punched with the Bough Punch.
- Very Vanilla cs sentiment panel - 1/2" x 2 7/8".
- Very Vanilla cs inside panel - 5 1/8" x 3 7/8".
- Black & White Gingham ribbon - 7 1/2"

DSP = Designer Series Paper

cs = cardstock

Supplies needed:



Happiness Abounds

Photopolymer Stamp Set
(English)
[159238]
\$23.00



Tuxedo Black Memento Ink

Pad
[132708]
\$6.00



Petal Pink Stampin' Blends

Combo Pack
[154893]
\$9.00



Clear Wink Of Stella Glitter

Brush
[141897]
\$8.00

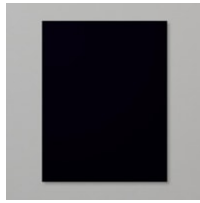


Very Vanilla 8-1/2" X 11" Thick

Cardstock
[144237]
\$8.75



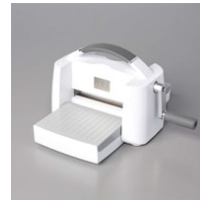
Abigail Rose 12" X 12" (30.5 X 30.5 Cm) Designer Series Paper
 [159037]
 \$12.00



Basic Black 8-1/2" X 11" Cardstock
 [121045]
 \$9.25



Very Vanilla 8-1/2" X 11" Cardstock
 [101650]
 \$10.25



Stampin' Cut & Emboss Machine
 [149653]
 \$125.00



Teacup Dies
 [160186]
 \$27.00



Quatrefoil Tile Embossing Folder
 [158655]
 \$8.50



Pretty Flowers Embossing Folder
 [15428]
 \$7.50



Bough Punch
 [157711]
 \$19.00



Paper Trimmer
 [152392]
 \$25.00



Paper Snips
 [103579]
 \$11.00



Bone Folder
 [102300]
 \$7.00



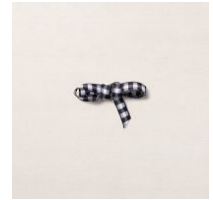
Stampin' Pierce Mat
 [126199]
 \$5.00



Simply Shammy
 [147042]
 \$8.50



Take Your Pick
 [144107]
 \$10.00



Black & White 1/4" (6.4 Mm) Gingham Ribbon
 [156485]
 \$7.00



Rhinestone Basic Jewels
 [144220]
 \$6.00



Mini Glue Dots
 [103683]
 \$5.25



Stampin' Dimensionals
 [104430]
 \$4.25



Multipurpose Liquid Glue
 [110755]
 \$4.00



Limited Edition Cling Stamp Set (English)
 [158754]
 \$19.00

Project Recipe:



1. Start with a Very Vanilla Thick cardstock (cs) card base. Cut a Very Vanilla cs panel, dry emboss it with the Pretty Flowers embossing folder, and then glue the embossed panel to the card front. Cut the Abigail Rose Designer Series Paper (DSP) panel and Basic Black cs panel. Cut both of the Abigail Rose DSP panel and the Basic Black cs panel diagonally to create the triangle pieces. Glue the DSP triangle panel to the Basic Black cs triangle panel layer and then glue them both to the card front lined up flush with the embossed panel.



2. Die cut a Basic Black cardstock teacup with the Teacup dies. Dry emboss the teacup with the Quatrefoil Tile embossing folder. Use Stampin' Dimensionals to add the embossed teacup to the card front (be sure when adding the dimensionals there is room at the top to fill with the flowers). Fussy cut flowers and leaves from the Abigail Rose DSP. Add a little color to the main flower with Stampin' Blends and add Wink of Stella to the flowers blooms for sparkle. Punch three Basic Black cs sprigs with the Bough Punch. Use glue and glue dots to tuck the flowers, leaves, and punched sprigs into the teacup to create the bouquet.



3. Use a dark Petal Pink Stampin' Blend to color Black & White Gingham ribbon and then tie the colored ribbon into a small bow. Use glue dots to add the bow to the teacup bouquet. Add rhinestone gems to the bouquet for extra sparkle.



4. Cut a Very Vanilla cs sentiment panel. Stamp the sentiment from the Happiness Abounds stamp set in Memento Black ink. Use paper snips to cut off any access panel around the sentiment and then glue it to the bottom of the card front centered on the DSP triangle panel.



5. I added a Very Vanilla cs inside panel for extra strength to write my message. Stamp the sentiment from the Happiness Abounds stamp set and add a strip of DSP to the inside and back of the card to pull the theme through. I also added fussy cut leaves and a flower to the inside of the card.