

Christy Gridley

<http://www.christysstampingspot.com/>

christysstampingspot@gmail.com

Hippest Hippos Rings of Love Leaves Card



Card Measurements:

Crumb Cake cs card base - 11" x 4 1/4" scored at 5 1/2".

Embossed Crumb Cake cs panel - 5 1/4" x 4" plus two 1/2" x 4" strips.

Basic White cs stitched circle - (3") Stylish Shapes dies.

Rings of Love DSP leaves - fussy cut with paper snips.

Basic White cs hippo - die cut with Hippo dies.

Basic White cs panel - 5 1/8" x 3 7/8".

Early Espresso Faux Suede Trim

DSP = Designer Series Paper

cs = cardstock

Supplies needed:



Hippest Hippos Cling Stamp

Set (English)

[159921]

\$0.00



Shaded Summer Cling Stamp

Set

[155783]

\$23.00



Tuxedo Black Memento Ink

Pad

[132708]

\$6.00



Crumb Cake Stampin' Blends

Combo Pack

[154882]

\$9.00



Gray Granite Stampin'

Blends Combo Pack

[154886]

\$9.00



Petal Pink Stampin' Blends

Combo Pack

[154893]

\$9.00



Clear Wink Of Stella Glitter

Brush

[141897]

\$8.00



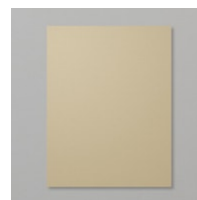
Rings Of Love 12" X 12" (30.5 X

30.5 Cm) Designer Series

Paper

[159939]

\$0.00



Crumb Cake 8-1/2" X 11"

Cardstock

[120953]

\$9.25



Basic White 8 1/2" X 11"

Cardstock

[159276]

\$10.25



Stampin' Cut & Emboss Machine
[149653]
\$125.00



Stylish Shapes Dies
[159183]
\$30.00



Hippo Dies
[159928]
\$0.00



Leaf Fall 3 D Embossing Folder
[159847]
\$10.00



Paper Trimmer
[152392]
\$25.00



Paper Snips
[103579]
\$11.00



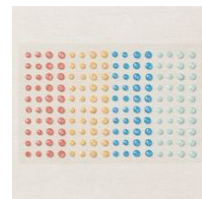
Bone Folder
[102300]
\$7.00



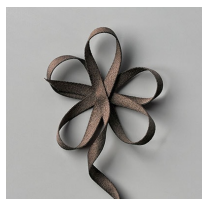
Simply Shammy
[147042]
\$8.50



Take Your Pick
[144107]
\$10.00



Fine Sparkle Adhesive Backed Gems
[159967]
\$7.50



Early Espresso 1/4" (6.4 Mm) Faux Suede Trim
[152472]
\$6.50



Stampin' Seal
[152813]
\$8.00



Mini Glue Dots
[103683]
\$5.25



Stampin' Dimensionals
[104430]
\$4.25



Multipurpose Liquid Glue
[110755]
\$4.00



2022 2024 In Color Grid Paper
[160009]
\$9.00



Limited Edition Cling Stamp Set (English)
[158754]
\$19.00

Project Recipe:



1. Start with a Crumb Cake cardstock (cs) card base. Cut a Crumb Cake cs panel and dry emboss it with the Leaf Fall 3D embossing folder. Wrap the embossed panel with Early Espresso Faux Suede Trim using Stampin' Seal to secure the ends on the back of the embossed panel. Glue the wrapped embossed panel to the card base.



2. Die cut a Basic White cs stitched circle with the Stylish shapes dies. Stamp the sentiment from the Shaded Summer stamp set in Memento Black ink on the upper left side of the stitched circle. Use Stampin' Dimensionals to add the stamped stitched circle to the card front overlapping the wrapped ribbon. Fussy cut out leaves from the Rings of Love Designer Series Paper (DSP) with paper snips.



3. Stamp the hippo image from the Hippest Hippos stamp set in Memento Black ink on Basic White cs and die cut the image out with the Hippo dies. Color the image with Stampin' Blends and add Wink of Stella to the hippo for sparkle. Use Stampin' Dimensionals to add the die cut colored hippo (be sure to position the dimensionals so there is room to tuck the fussy cut leaves under the right side of the hippo) to the right side of the stitched circle.



4. Use glue to tuck the fussy cut leaves under the right side of the hippo. Add Fine Sparkle Adhesive-Backed Gems to the card front for extra sparkle. Tie a small bow with the Early Espresso Faux Suede Trim and attach the bow with glue dots on the right side of the stitched circle overlapping the wrapped ribbon.



5. Don't forget to add a Basic White cs inside panel to write your message. I added a strip of embossed Crumb Cake cs and stamped the sentiment to the inside & back of the card to pull the theme through.