

Christy Gridley

<http://www.christysstampingspot.com/>

christysstampingspot@gmail.com

Basic White & Perfectly Penciled DSP Teacup Card



Card Measurements:

- Basic White Thick cs card base - 11" x 4 1/4" scored at 5 1/2".
- Embossed Basic White cs panel - 5 3/8" x 4 1/8".
- Perfectly Penciled DSP panel triangle - 5 1/4" x 4" cut diagonally plus two 1/2" x 4" strips.
- Basic Black cs panel triangle layer - 5 3/8" x 4 1/8" cut diagonally.
- Embossed Basic Black cs teacup - die cut with Teacup dies.
- Perfectly Penciled DSP flowers & leaves - fussy cut with paper snips.
- Basic Black cs sprigs - three punched with the Bough Punch.
- Basic White cs sentiment panel - 1/2" x 2 7/8".
- Basic White cs inside panel - 5 1/8" x 3 7/8".
- Black & White Gingham ribbon - 7 1/2"

DSP = Designer Series Paper

cs = cardstock

Supplies needed:



Happiness Abounds
Photopolymer Stamp Set
(English)
 [159238]
 \$23.00



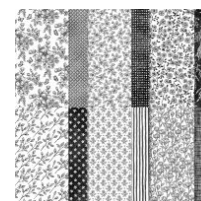
Tuxedo Black Memento Ink
Pad
 [132708]
 \$6.00



Clear Wink Of Stella Glitter
Brush
 [141897]
 \$8.00



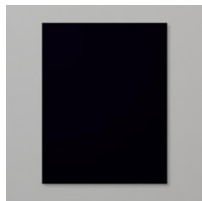
Basic White 8 1/2" X 11" Thick
Cardstock
 [159229]
 \$8.75



Perfectly Penciled 12" X 12"
(30.5 X 30.5 Cm) Designer
Series Paper
 [159244]
 \$12.00



Basic White 8 1/2" X 11"
Cardstock
 [159276]
 \$10.25



Basic Black 8-1/2" X 11"
Cardstock
 [121045]
 \$9.25



Stampin' Cut & Emboss
Machine
 [149653]
 \$125.00



Teacup Dies
 [160186]
 \$27.00



Quatrefoil Tile Embossing
Folder
 [158655]
 \$8.50



Pretty Flowers Embossing
Folder
 [155428]
 \$7.50



Bough Punch
 [157711]
 \$19.00



Paper Trimmer
 [152392]
 \$25.00



Paper Snips
 [103579]
 \$11.00



Bone Folder
 [102300]
 \$7.00



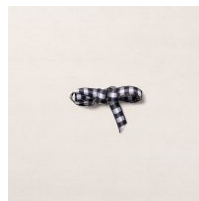
Stampin' Pierce Mat
 [126199]
 \$5.00



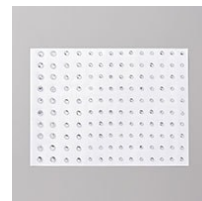
Simply Shabby
 [147042]
 \$8.50



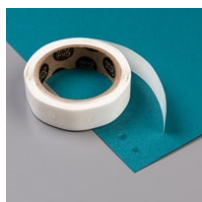
Take Your Pick
 [144107]
 \$10.00



Black & White 1/4" (6.4 Mm)
Gingham Ribbon
 [156485]
 \$7.00



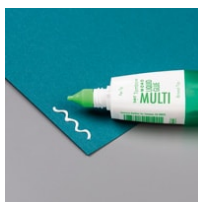
Rhinstone Basic Jewels
 [144220]
 \$6.00



Mini Glue Dots
 [103683]
 \$5.25



Stampin' Dimensionals
 [104430]
 \$4.25



Multipurpose Liquid Glue
 [110755]
 \$4.00



Limited Edition Cling Stamp
Set (English)
 [158754]
 \$19.00

Project Recipe:



1. Start with a Basic White Thick cardstock (cs) card base. Cut a Basic White cs panel, dry emboss it with the Pretty Flowers embossing folder, and then glue the embossed panel to the card front. Cut the Perfectly Penciled Designer Series Paper (DSP) panel and Basic Black cs panel. Cut both of the Perfectly Penciled DSP panel and the Basic Black cs panel diagonally to create the triangle pieces. Glue the DSP triangle panel to the Basic Black cs triangle panel layer and then glue them both to the card front lined up flush with the embossed panel.



2. Die cut a Basic Black cardstock teacup with the Teacup dies. Dry emboss the teacup with the Quatrefoil Tile embossing folder. Use Stampin' Dimensionals to add the embossed teacup to the card front (be sure when adding the dimensionals there is room at the top to fill with the flowers). Fussy cut flowers and leaves from the Perfectly Penciled DSP. Add Wink of Stella to the flowers blooms for sparkle. Punch three Basic Black cs sprigs with the Bough Punch. Use glue and glue dots to tuck the flowers, leaves, and punched sprigs into the teacup to create the bouquet.



3. Tie a small bow with the Black & White Gingham ribbon. Use glue dots to add the bow to the teacup bouquet. Then add rhinestone gems to the bouquet for extra sparkle.



4. Cut a Basic White cs sentiment panel. Stamp the sentiment from the Happiness Abounds stamp set in Memento Black ink. Use paper snips to cut off any access panel around the sentiment and then glue it to the bottom of the card front centered on the DSP triangle panel.



5. I added a Basic White cs inside panel for extra strength to write my message. Stamp the sentiment from the Happiness Abounds stamp set and add a strip of DSP to the inside and back of the card to pull the theme through. I also added fussy cut leaves and a flower to the inside of the card.