

Christy Gridley

<http://www.christystampingspot.com/>

christystampingspot@gmail.com

# Waves of the Ocean Card 2



## Card Measurements:

Coastal Cabana cs card base - 11" x 4 1/4" scored at 5 1/2".

Petal Pink cs panel - 5 3/8" x 4 1/8".

Waves of the Ocean DSP panel - 5 1/4" x 4" plus two 1/2" x 4" strips.

Basic White cs wave - fussy cut with paper snips.

Coastal Cabana Foil wave layer - die cut with the Waves dies.

Coastal Cabana cs palm trees - 2 die cut with the Palms dies.

Basic White cs clouds - die cut with the Waves dies.

Vellum cs label layer - die cut with Tasteful Labels dies.

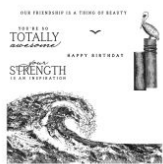
Basic White cs sentiment label - die cut with Tasteful Labels dies.

Basic White cs inside panel - 5 1/8" x 3 7/8".

DSP = Designer Series Paper

cs = cardstock

## Supplies needed:



**Waves Of Inspiration Cling  
Stamp Set (English)**  
[158833]  
\$23.00



**Waves Of Inspiration Bundle  
(English)**  
[158841]  
\$51.25



**Paradise Palms Cling Stamp  
Set (English)**  
[157716]  
\$23.00



**Paradise Palms Bundle**  
[157719]  
\$52.00



**Coastal Cabana Classic  
Stampin' Pad**  
[147097]  
\$7.50



**So Saffron Classic Stampin' Pad**  
[147109]  
\$7.50



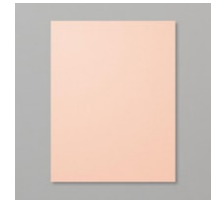
**Clear Wink Of Stella Glitter Brush**  
[141897]  
\$8.00



**Waves Of The Ocean 12" X 12" (30.5 X 30.5 Cm) Designer Series Paper**  
[159982]  
\$11.50



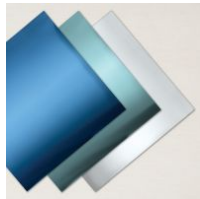
**Coastal Cabana 8-1/2" X 11" Cardstock**  
[131297]  
\$8.75



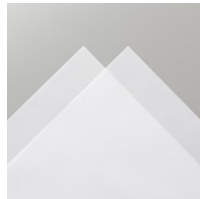
**Petal Pink 8-1/2" X 11" Cardstock**  
[146985]  
\$8.75



**Basic White 8 1/2" X 11" Cardstock**  
[159276]  
\$9.75



**Blue Foils 12" X 12" (30.5 X 30.5 Cm) Specialty Paper**  
[159983]  
\$10.00



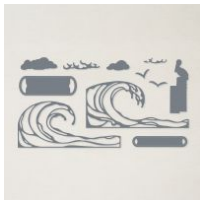
**Vellum 8-1/2" X 11" Cardstock**  
[101856]  
\$10.00



**Stamparatus**  
[146276]  
\$49.00



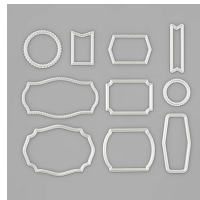
**Stampin' Cut & Emboss Machine**  
[149653]  
\$120.00



**Waves Dies**  
[158840]  
\$34.00



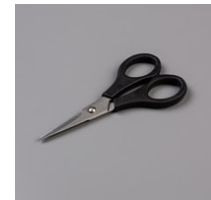
**Palms Dies**  
[157718]  
\$35.00



**Tasteful Labels Dies**  
[152886]  
\$31.00



**Paper Trimmer**  
[152392]  
\$25.00



**Paper Snips**  
[103579]  
\$10.00



**Bone Folder**  
[102300]  
\$7.00



**Simply Shabby**  
[147042]  
\$8.00



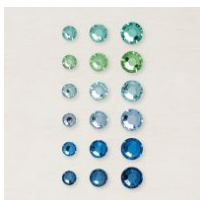
**Silicone Craft Sheet**  
[127853]  
\$6.00



**Take Your Pick**  
[144107]  
\$10.00



**Blending Brushes**  
[153611]  
\$12.00



**Rhinstone Waves Basic Jewels**  
[159396]  
\$6.50



**Adhesive Sheets**  
[152334]  
\$10.00



**Stampin' Dimensionals**  
[104430]  
\$4.00



**Multipurpose Liquid Glue**  
[110755]  
\$4.00

## Project Recipe:



1. Start with a Coastal Cabana cs card base. Cut a Petal Pink cs panel and a Wave of the Ocean DSP panel. Stamp the wave image from the Waves of Inspiration stamp set (I used my Stamparatus) on Basic White cs in Coastal Cabana ink and then use paper snips to fussy cut out the image. Glue the wave to the DSP panel. Cut a piece of Coastal Cabana Foil Specialty paper (2 1/2" x 5 1/2") and apply a matching piece of the Adhesive Sheet (2 1/2" x 5 1/2") to the back of the foil. Die cut out a wave (with the straight edge) from the adhesive backed foil with the Waves dies. Add the wave foil layer over the stamped wave image. Use paper snips to cut off the excess stamped wave Basic White cs & foil wave layer so they are flush with the DSP panel.



2. Die cut out two Coastal Cabana cs palms with the Palms dies. Add the die cut palm trees with glue to the DSP and then snip off the excess. Glue the DSP panel to the Petal Pink cs panel and then glue the panels to the card base.



3. Die cut out a Basic White cs circle label and a Vellum cs larger circle label with the Tasteful Labels dies. Die cut out Basic White cs clouds with the Waves dies. Glue the clouds to the top left side of the card front. Stamp the sentiment from the Paradise Palms stamp set in Coastal Cabana ink on the Basic White cs circle label. Add So Saffron ink to the stamped circle label with a blending brush. Use glue to attach the sentiment circle label to the Vellum cs circle label layer. Add the circle labels to the card front overlapping the die cut clouds. Add Rhinestone Waves Basic Jewels to the card front and Wink of Stella to the stamped wave for sparkle.



4. Add a Basic White cs inside panel to write your message. Stamp the sentiment from the Paradise Palms stamp set in Coastal Cabana ink. Add a strip of DSP to the inside panel & back of the card to pull the theme through.