

Christy Gridley

<http://www.christysstampingspot.com/>

christysstampingspot@gmail.com

Thursday's Double Feature: Clever Cats Christmas Card 2



Card Measurements:

Soft Succulent cs card base - 11" x 4 1/4" scored at 5 1/2".

Basic White cs panel layer - 5 3/8" x 4 1/8".

Tiding of Christmas DSP panel - 5 1/4" x 4" plus two 1/2" x 4" strips.

Basic White cs label - (3") die cut with the Seasonal Labels dies.

Soft Succulent cs 2 piece tree - die cut with the Christmas Trees dies and cut to size with paper snips.

Misty Moonlight cs string of lights - die cut with the Christmas Trees dies and cut to size with paper snips.

Basic White cs cat in two pieces - fussy cut two sets with paper snips.

Cherry Cobbler cs ornaments - die cut with the Christmas Trees dies.

Gold Metallic Specialty paper star - die cut with the Christmas Trees dies.

Basic White cs inside panel - 5 1/8" x 3 7/8".

DSP = Designer Series Paper

cs = cardstock

Supplies needed:



Clever Cats Photopolymer Stamp Set
[156490]
\$17.00



Banner Year Photopolymer Stamp Set (English)
[153464]
\$17.00



Holly Jolly Wishes Cling Stamp Set (English)
[156362]
\$21.00



Pumpkin Pie Classic Stampin' Pad
[147086]
\$7.50



Evening Evergreen Classic Stampin' Pad
[155576]
\$7.50



**Basic Black Stampin' Write
Marker**
[100082]
\$3.00



**Bronze & Ivory Stampin'
Blends Combo Pack**
[154922]
\$9.00



**Clear Wink Of Stella Glitter
Brush**
[141897]
\$8.00



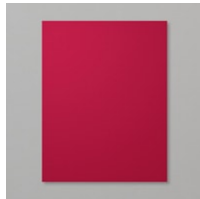
**Tidings Of Christmas 6" X 6"
(15.2 X 15.2 Cm) Designer
Series Paper**
[155718]
\$11.50



**Soft Succulent 8 1/2" X 11"
Cardstock**
[155776]
\$8.75



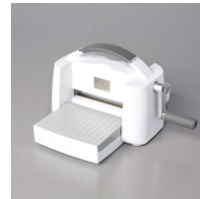
**Basic White 8 1/2" X 11"
Cardstock**
[159276]
\$9.75



**Cherry Cobbler 8-1/2" X 11"
Cardstock**
[119685]
\$8.75



**Gold & Rose Gold 6" X 6" (15.2
X 15.2 Cm) Metallic Specialty
Paper**
[156844]
\$5.00



**Stampin' Cut & Emboss
Machine**
[149653]
\$120.00



Seasonal Labels Dies
[156299]
\$38.00



Christmas Trees Dies
[156339]
\$35.00



Paper Trimmer
[152392]
\$25.00



Paper Snips
[103579]
\$10.00



Bone Folder
[102300]
\$7.00



Simply Shabby
[147042]
\$8.00



Take Your Pick
[144107]
\$10.00



Multipurpose Liquid Glue
[110755]
\$4.00

Project Recipe:



1. Start with a Soft Succulent cs card base. Cut a Basic White cs panel layer & a Tidings of Christmas DSP panel and glue them to the card front. Die cut a Basic White cs label with the Seasonal Labels dies. Stamp the sentiments from the Clever Cats & Banner Year stamp sets in Evening Evergreen ink on the label. Glue the label to the card front.



2. Die cut a the Soft Succulent cs tree & tree layer and the Misty Moonlight cs light string with the Christmas Trees dies. Glue the tree layer to the tree and then cut off the excess with paper snips. Glue the Misty Moonlight cs light string to the tree and then cut off the excess with paper snips. Stamp both the peeking cat & the tail/back end of the cat in a box image twice in Pumpkin Pie ink on Basic White cs. Color the images with the Ivory Stampin' Blend to give them stripes & texture. Use a Black Stampin' Write Marker to add pupils to the cat's eyes. Fussy cut the images out with paper snips. Use glue to add the peeking cat image to one side of the tree and the tail/back end to the other side of the tree so it looks like the cat is climbing the back of the tree. Use glue to add the tree & cat to the card front across the label. Die cut Cherry Cobbler cs ornaments and a Gold Metallic Specialty paper star with the Christmas Tree dies. Use glue to add the ornaments to the tree and the card front. Add Wink of Stella to the ornaments and the cat's eyes for extra sparkle.



3. Don't forget to add a Basic White cs inside panel to write your message. Stamp the sentiment from the Holly Jolly Wishes stamp set in Evening Evergreen ink and a strip of DSP to the inside and back of the card to pull them through. Add the second tail/back end image to the bottom of the inside panel even (or slightly tucked under) the DSP strip with glue. Add the peeking cat image slightly overlapping the tail/back end image above the strip with glue. Add Wink of Stella to the cat's eyes for extra sparkle.